



Dutchman

I N D U S T R I E S

DIVISION OF
Dutchmaster Nurseries Ltd.

Tree Planter

Owner's Manual

Manufactured and Sold by
Dutchman Industries Inc.
3735 Sideline 16, Brougham,
Ontario, Canada L0H 1A0

1.800.293.0070

1.905.683.8233

www.dutchmantreespade.com
www.dutchmantruckspade.com

Serial Number: _____

Date Of Purchase: _____

All rights reserved.
Reproduction of contents in any form strictly prohibited
without written consent of manufacturer.

Table of Contents

Table of Contents	3
Safety & Procedures	5
Safety Instructions	6
Pre-Start Inspection Instructions	8
Storage Instructions	9
Lubrication Instructions	9
Service and Maintenance	10
Mounting & Adjustments	13
General Information	14
Mounting, Setup & Starting Procedures	14
Schematics & Parts List	17
Replacement Parts List	19
Warranty	21

DUTCHMAN TREE PLANTER

SAFETY & PROCEDURES

SAFETY INSTRUCTIONS

THESE INSTRUCTIONS ARE OF GREAT IMPORTANCE AND MUST BE READ AND FOLLOWED CAREFULLY AND OBEYED.

➔ **ATTENTION:** *This ARROW symbol is used throughout this manual to call attention to the safety instructions.*

➔ **WARNING:** *Before attempting to operate the machine, fully read and follow all instructions herein with care.*

The safety of the operator is of great importance to Dutchman Industries Inc. We have provided decals, an Operators Manual, shields, and other safety features to aid you in using your equipment safely. Be a careful operator. Properly use and service your equipment according to instructions provided in this manual.

A) BEFORE OPERATING

- Read and follow all instructions contained in:
 - This Dutchman Equipment Manual,
 - Tractor Operator's Manual,
 - Decals placed on the equipment and Tractor.

Note: Additional copies of the above items are available from Dutchman Industries Inc. or your local authorized dealer.
- Be sure the unit is in good operating condition and that all safety devices are in place and secured. If they must be removed for service or maintenance, reinstall them before starting the engine.
- Allow only responsible, properly instructed individuals to operate the equipment. Carefully supervise inexperienced operators.
- Check with proper authorities regarding the location of underground gas lines, water lines, power lines and other installations.
- Check overhead for electrical power lines and/or other obstructions and be certain there is adequate clearance.
- Check the work area for objects, which interfere with the proper operation of the equipment.
- Clear the work area of objects, which might interfere with the proper operation of the equipment.
- A fire extinguisher should be available in case of fire.

SAFETY INSTRUCTIONS

B) DURING OPERATION

- *Do not* allow anyone to ride on the equipment except as intended and during normal operation.
- *When moving* the equipment vertically, be aware of all height clearances.
- *Do not* attempt to use this equipment for anything other than its intended purpose.
- *Keep* all others, especially children, away from the equipment.
- *Keep* hands, feet and clothing away from all moving parts.
- *Never* allow anyone to work under the equipment. It could drop unexpectedly resulting in severe personal injury.
- Be alert and use *extreme caution* when operating on or near hillsides, ditches, gullies, holes, or obstructions where rollover could occur.

C) DURING SERVICE AND MAINTENANCE

- *Check* periodically and tighten or replace any loose or cracked bolts.
- *Use* only parts authorized by Dutchman Industries for repair or replacement.

D) WHEN TRANSPORTING

- Be courteous and obey all applicable laws governing road use.
- Check with proper authorities regarding maximum width and height limitations.
- Be conscious of all height clearances.

SAFETY INSTRUCTIONS

➔ WARNING: Failure to comply with the above safety instructions or those that follow within this manual could result in severe personal injury or death. This equipment is to be used only for those purposes for which it is intended as explained in the Operators Manual.

E) SAFETY DECALS

Safety decals located on your equipment contain important and useful information that will help you operate your equipment safely.

To ensure that all decals remain in place and in good condition follow the instructions below:

1. Keep decals clean using soap and water. Do not use mineral spirits, adhesive cleansers or similar cleaners as they will damage decals.
2. Replace any damaged or missing decals. When attaching decals, surface temperature of the metal must be a minimum of 40 ° F (5 ° C). The metal must be clean and dry.
3. When replacing a component to which a decal is attached be sure to also replace the decal.
4. Replacement decals can be purchased from your Dutchman Industries Inc, or your local authorized dealer.

PRE-START INSPECTION INSTRUCTIONS

To ensure long life and economical operation of your equipment, we highly recommend the operator be thoroughly instructed in the maintenance and operation of the equipment. There is no substitute for a sound, preventative maintenance program and a well-trained operator.

Prior to starting the engine we recommend the operator make a visual inspection of the equipment and make any necessary adjustments and repairs. This can be done at the time of machine lubrication.

Check the following on the equipment:

- Condition of decals
- Components for signs of fatigue
- Bolts for tightness
- Grease points

STORAGE INSTRUCTIONS

➔**WARNING:** *When preparing the equipment for storage, use normal shutdown procedure.*

BEFORE STORAGE

1. Clean all mud, dirt, grease and other foreign material from the exterior of the equipment. Wash it completely. Repaint places where bare metal is exposed to inhibit rust.
2. Clean the working components. It is advised to coat them with a rust preventative compound.
3. If possible, store the equipment in a dry, protected place. If storing the equipment outside, cover with waterproof canvas, plastic or other suitable protective material.
4. Lubricate the equipment thoroughly including all grease points.
5. Check the equipment for any worn or broken parts, as well as torn or ripped decals.
6. Order parts now to prevent delays when taking the equipment out of storage for a new season.
7. When ordering parts/decals, always quote the serial number and model number of the equipment.

REMOVING FROM STORAGE

1. Remove all protective covering.
2. Tighten all loose bolts or nuts.
3. Make certain working components are free of dirt inside and outside.
4. Refer to the pre-starting inspection instructions.

LUBRICATION INSTRUCTIONS

All Dutchman products are completely serviced at the factory before shipping. However, the operator should check all grease fittings on the unit before beginning to operate it so as to become familiar with their location and the correct service schedule.

➔**WARNING:** *Use the normal shut-down procedure before lubricating the equipment.*

Use only high quality, multi-purpose grease when lubricating the unit. Make sure all fittings and nozzle of the grease applicator are clean before applying the grease. If any grease fittings are missing or plugged, replace them immediately.

Ensure grease is travelling through the grease fittings. Excess grease bulging at all exit points is evidence of a full and thorough greasing.

Do not grease the inside or outside of working components which utilize wear pads, they must be kept dry and clean. Grease on these components will do more harm than good. Dirt and debris will stick to the grease and thus damage the high-density wear pads.

SERVICE AND MAINTENANCE

1. All bolts on the Planter must be kept tight and in good repair. Worn bolts should be replaced immediately. Pay special attention to the bolt that connects the Planter Shoe; it may need to be replaced yearly.
2. Every year the front cutting edges and suction tooth of the planter shoe should be inspected. These parts are designed to take the wear of normal operation and prevent damage to the shoe, and can be replaced. See the replacement parts list below on page 19 and contact your local authorized Dutchman dealer to order replacements.
3. Yearly or bi-yearly inspections should be done on the packing wheel bearings.

DUTCHMAN TREE PLANTER

MOUNTING & ADJUSTMENT

DUTCHMAN INDUSTRIES INC.

GENERAL INFORMATION

The following instructions will assist you in mounting the planter to the 3-point hitch apparatus of your tractor.

➔ **ATTENTION: Remember to read all safety warnings, decals and operating instructions before operating.**

Before using the tree planter, consideration must be given to how deep the trees will be planted and soil conditions. **Dutchman Industries recommends subsoiling down 2 to 3 inches below the intended planting depth, and tilling the soil before planting. Failure to do so may cause excessive wear or breakage of planter components.**

MOUNTING, SETUP, & STARTING PROCEDURES

1. Remove the steel shipping banding from around the planter.
2. Reverse the tractor and lower 3-point hitch arms to one of the four adjustable lift arm settings on the planter hook-up. Connect 3-point hitch pins securely.
3. Connect the 3-point top-link bar to one of the three adjustable top-link settings. Connect top-link pin securely

Note: the lift arm and top-link settings allow the user to select the proper position for the planter, relative to the frame and tire size of the tractor.

4. Once the planter is connected securely, raise the planter up using the 3-point hitch arms. At this point the planter shoe depth may be altered by changing the pin placement on the shoe. Also, the carrying bars/boxes and packing wheels can be flipped outward to their operating position.

Note: if the planter is equipped with an adjustable row marker, the lift chain and row marker arm may be set to the desired height and length at this time.

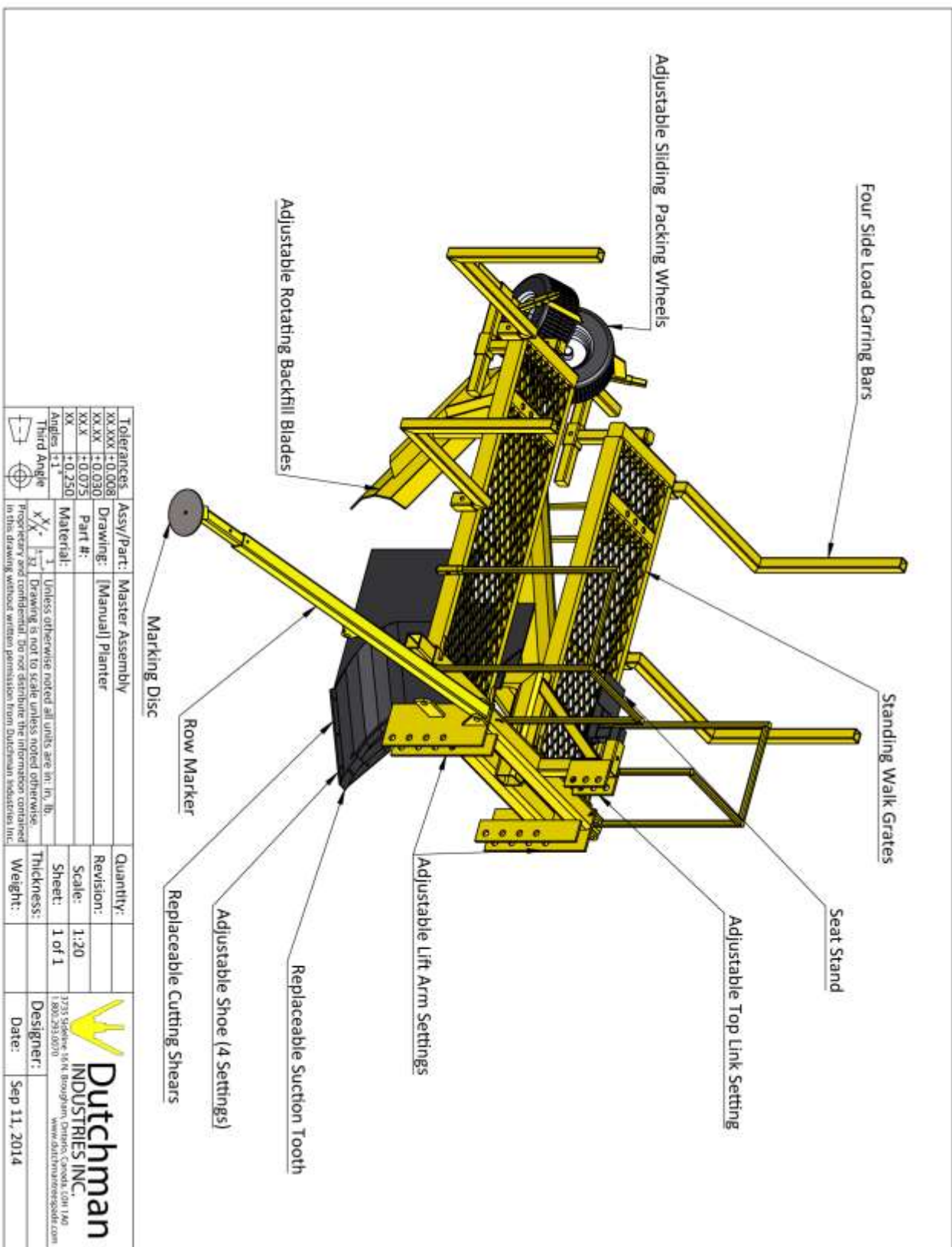
5. The adjustable backfill blades can be rotated to the desired backfill position at this time, or in some cases may be repositioned to a secondary mounting location.
6. Complete the included post-delivery checklist.
7. Before the planting process, test runs should be completed to be sure all adjustable components are properly set to produce the desired results. Adjustments may need to be made to the planter mounting, the shoe, the backfill blades or the packing wheels.
8. The planter is now ready for use.

DUTCHMAN TREE PLANTER

SCHEMATICS & PARTS LISTS

DUTCHMAN INDUSTRIES INC.

TREE PLANTER DIAGRAM



REPLACEMENT PARTS LIST

Suction Tooth



Cutting edges



Packing Wheel



Cushioned Seat



Interchangeable Shoe



Row Marker



Dutchman Industries Inc.

W A R R A N T Y

Dutchman Industries Inc., herein referred to as DMI, warrants each new industrial product of its own manufacture to be free from defects in material and workmanship, under normal use and service for one(1) full year after delivery to the owner.

During the warranty period, the authorized selling DMI Dealer shall furnish parts without charge for any DMI product that fails because of defects in material and/ or workmanship. This warranty and any possible liability of DMI hereunder is in lieu of all other warranties express, implied or statutory, including but not limited to any warranties of merchantability or fitness for a particular purpose.

The parties agree that the Buyer's SOLE AND EXCLUSIVE REMEDY against DMI, whether in contact or arising out of warranties, representations, instructions, or defects shall be for the replacement or repair of defective parts as provided herein. The Buyer agrees that no other remedy (including, but not limited to, incidental or consequential loss) shall be available to them. If, during the warranty period, any product becomes defective by reason of material or workmanship and the Buyer immediately notifies DMI of such defect, DMI shall, at its option, supply a replacement part or request return of the product to its plant in Brougham, Ontario, Canada. No parts shall be returned without prior written authorization from DMI, and this warranty does not obligate DMI to bear any transportation charges in connection with the repair or replacement of defective parts. DMI will not accept any charges for labour and/or parts incidental to the removal or remounting of parts repaired or replaced under this Warranty. **A formal, faxed estimate to DMI is required prior to any foreseen warranty repairs, alterations and/or labour.**

This Warranty shall not apply to any part or product which have been installed or operated in a manner not recommended by DMI; nor to any part or product that has been neglected or used in any way, which in the Manufacturer's opinion, adversely affects its performance; not negligence of proper maintenance or other negligence, fire or other accident; not with respect to wear items included but not limited to items such as tree spade blades and wear strips; nor if the unit has been altered or repaired outside of a DMI authorized dealership in a manner of which, in the sole judgment of DMI affects its performance, stability or reliability. Equipment and accessories not of DMI manufacture are warranted only to the extent of the original Manufacturer's Warranty and subject to their allowance to DMI, if found defective by the original Manufacturer.

DMI reserves the right to modify, alter and improve any product or part without incurring any obligation to replace any product or parts previously sold with such modified, altered, or improved product or part.

No person is authorized to give any other Warranty or to assume any additional obligation on the behalf of DMI unless made in writing and signed by an officer of DMI.